



ARTICLE INFO

Open Access



Date Received:
14/02/2023;
Date Revised:
20/04/2023;
Date Published Online:
30/06/2023;

Association between polymorphism of the CRP gene rs1130864 and hypertension among Iraqi hypertensive patients

Luay Qasim Abdulhameed*, Mohanad W. Mahdi Alzubaidy

Authors' Affiliation:
Department of biology,
College of Education for Pure
Sciences, University of Diyala
- Iraq

***Corresponding Author:**
Luay Qasim Abdulhameed
Email:
biology.man1986@gmail.com

How to Cite:
Abdulhameed LQ, Alzubaidy
MWM (2023). Association
between polymorphism of
the CRP gene rs1130864 and
hypertension among Iraqi
hypertensive patients. Adv.
Life Sci. 10(2): 157-160.

Keywords:
Hypertension; C-reactive
protein; Polymorphism,
1444G>A; rs1130864

Abstract

Background: C-reactive protein (CRP) a reactant of the acute phase and a measure of persistent low-grade inflammatory processes. Objectives of this paper to the role of rs1130864 polymorphism in CRP gene among Iraqi hypertensive patients.

Methods: Samples of blood were collected from patients with hypertension and controls, their age (37 to 75). Hardy-Weinberg equilibrium (HWE) was used to calculate the risk score for the disease of hypertension, Moreover, PCR/SNP (specific primers) was used to do genotyping.

Results: HWE analysis of hypertensive patients and controls showed that the rs1130864 genotypes were in agreement with the equilibrium, without differences clear between the observed and expected genotype frequencies ($p > 0.153, 0.238$). The frequencies of genotype and alleles were compared in hypertensive patients with controls, with no significant differences. The common GG genotype of rs1130864 recorded a significant increase in hypertensive patients and controls and was regarded as a preventative fraction (RR = 0.76), whilst, GA, AA genotype were considered the etiological fraction (RR = 1.06, 2.59) and associated with hypertension. Compared to A allele, which might be the cause of the disease, G allele might be preventative.

Conclusion: The findings showed that the Iraqi population's GA, AA genotype, and A allele are risk factors for hypertension. However, the need for additional findings utilizing bigger samples is needed are necessary to verify our findings.



Introduction

The global prevalence of hypertension, a prevalent cardiovascular disease, is roughly 1 billion. Even though more than 70% of patients with hypertension are aware of their disease, only 23% to 49% of them receive treatment, and only fewer (20%) are adequately managed achieving control [1]. Because it commonly affects target organs (brain, heart, kidney, and eyes) before clinical symptoms appear, hypertension is known as the "silent killer"[2]. It is postulated that the cause of primary hypertension, which accounts for 95% of all cases of hypertension, is a mosaic network of environmental and genetic variables that interact with each other [3]. Moreover, there are factors (such as obesity, smoking, negative socio-economic conditions and various disease states) that increase C-reactive protein (CRP) levels, which in themselves affect blood pressure levels [4].

Several researchers have recently noted that those with hypertension have greater CRP concentrations. This suggests that one of the primary factors resulting in an elevated risk for myocardial infarction (MI) in hypertensive patients, Caused by high CRP levels [5]. In clinical practice, serum CRP levels exceeding 3.0 mg/l are commonly used as a cardiovascular prognostic marker, despite the fact that these values are known to vary depending on population genetics, sex, age, and other cardiovascular risk factors. However, the usefulness of CRP in predicting cardiovascular risk beyond traditional risk factors is still debatable [6]. CRP a reactant of the acute phase and a measure of persistent low-grade inflammatory processes. It can predict heart attacks and strokes; it was also mentioned as the only circulating biomarker associated with vascular wall biology [7].

The human CRP gene location is at 1q23.2 region on the proximal long arm of first chromosome, and the CRP gene sequence contains 1 intron separating 2 exons [8]. Many investigations have demonstrated the relationship between the CRP gene's single-nucleotide polymorphisms (SNPs) and differences in blood serum CRP levels, or with diabetes, insulin resistance, microangiopathic stroke, coronary heart disease, hypertension, and metabolic syndrome [9]. Moreover, recent research has demonstrated that serum CRP levels could be affected by CRP SNPs (single nucleotide polymorphisms) and haplotypes in the various populations. Additionally, it was discovered that CRP genotypes were linked to cardiovascular event mortality [10]. For the recently identified polymorphisms in the CRP gene, several polymorphisms have already been reported including a role for the rs1130864 polymorphism in cardiovascular diseases [11]. However, there is conflicting data about the function of 1444G>A (rs1130864), although some

researchers have found positive correlations with heart disease and blood vessels [12]. Our current research was carried in order to verify the role of rs1130864 polymorphism in CRP gene among Iraqi hypertensive patients.

Methods

Participants

The total number of adult hypertensive patients was 45 with 55 adult individuals consider as control group taken from different regions of Diyala Province, and their age range was 37-75 years. They were attending out laboratories in Baqubah city/ Diyala province during September 2020 – July 2021 for treatment and diagnosis. The samples of blood were stored in tubes containing EDTA and maintained kept at 20–25°C until they were utilized for DNA extraction from each isolation.

Preparation and DNA extraction

Genomic DNA has been extracted with the ReliaPrep™ gDNA Miniprep System from EDTA blood (Promega, USA), and exposed to PCR amplification after ensuring purity and concentration. Primers used for rs1130864 design by PRIMER3PLUS software, as shown in Table 1.

Primer name	(5'-3') Seq	product size
rs1130864-F	5'-CTGTCCTCGACCCATGAGAT-3'	388 bp
rs1130864-R	5'-TAACGAGCTCCCAGACCAGA-3'	

Table 1 : rs1130864 was amplified using a primer.

Preparation PCR mixture

The 25µl blend is made up of Green Master Mix (Bioneer company), template DNA, deionized water and primer solution with each of the following volumes (Table 2). PCR was used for detecting rs1130864 in hypertensive patients. The mixture-containing PCR tubes were placed inside a preheated thermocycler, with program was initiated as given in Table 3.

Amount	Component
12.5µl	Master Mix
3µl	DNA template
1.5 Forward + 1.5 Reverse	Primer
6.5µl	Deionized water
25µl	Total

Table 2: PCR reaction mixture components.

Steps	Temperature	Time	Cycles number
Initial denaturation	94	min5	1
Denaturation	94	30 sci	35
Annealing	58	30 sci	
Extension	72	30 sci	
Final extension	72	10min	1

Table 3: Program of PCR reaction conditions for rs1130864.

Exclusion criteria

Volunteers with lipid disturbance, heart failure, valvular heart disease, ischemic heart disease, chronic kidney illness, thyroid disease, and any other chronic systemic illnesses including cardiovascular disease or

malignancies were not allowed to participate in the study.

Statistical analysis

The X2-test was used to identify the Hardy-Weinberg equilibrium in both controls and cases. The frequencies of genotype and alleles differences between the patients and controls were discovered using chi-square analysis. 95% confidence intervals (CIs) and Odds ratios (ORs) were extracted. P-values < 0.05 were regarded as significant.

Results

Electrophoresis of agarose gel for PCR amplified products (rs1130864 SNP) of the CRP gene revealed a single 388 bp molecular size band, as shown in the current study (Fig. 1). Three genotypes (AA, GA, GG) and two alleles (A and G) were presented for the rs1130864 (G/A; Chromosome1). There were no significant variations (p >0.153-0.238) in the expected and observed genotype frequencies in the genotypes of hypertension patients and healthy participants, indicating that the genotypes were in agreement with the equilibrium (Table 4).

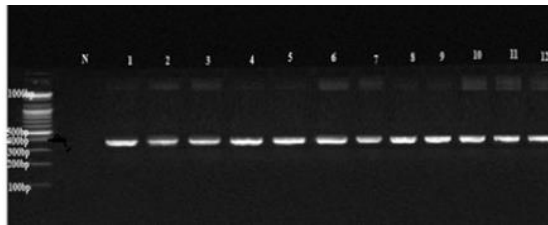


Figure 1: Gel electrophoresis of CRP gene PCR products (rs1130864 SNP), on 1% agarose at 90 volts. For 90 minutes showing bands of 388bp, DNA Ladder:1500bp.

Groups	observed & expected of genotype	No. (%) of genotype	CRP gene rs1130864-Genotypes or alleles					H-W χ^2	P ^c
			GG	GA	AA	A	G		
hypertensive patients (No.=45)	Observed	No.	24	17	4	25	65	0.153	NS
		%	53.3	37.7	8.8	27.7	72.2		
	Expected	No.	23.4	18.0	3.4	Not estimated			
		%	52.1	40.1	7.7				
Controls (No.=55)	Observed	No.	33	20	2	24	86	0.238	NS
		%	60	36.3	5.6	21.8	78.2		
	Expected	No.	33.6	18.7	2.6	Not estimated			
		%	61.1	34.1	4.7				

NS: Non-significant

Table 4: (Observed and expected) frequency distributions of numbers and percentages of CRP gene (rs1130864) genotypes and their (HWE) in hypertensive patients and control.

Type of comparison	rs1130864 Genotype or Allele	Statistical Evaluation		95% Confidence Intervals	Fisher's Exact Probability
		Preventive or Etiological fraction (PF or EF)	Relative Risk (RR)		
hypertensive patients versus Controls	GG	23.8%	0.76	0.32-1.82	0.547
	GA	5.9%	1.06	0.43-2.59	1.000
	AA	61.3%	2.59	0.35-29.62	0.404
	G	27.4%	0.73	0.36-1.46	0.409
	A	27.4%	1.38	0.69-2.77	0.409

Table 5: Analysis of the statistical relationship between the genotypes and alleles of the CRP gene (rs1130864) in hypertensive individuals and control groups.

Discussion

The CRP gene - rs1130864SNP, according to the findings of this study, gave rise to three genotypes (GG, GA, and AA), each of which corresponds to two alleles (Table 4), in accordance with the Hardy-Weinberg equation (HWE). These genetic patterns (G and A) were be compatible as in Table 5.

The rs1130864SNP polymorphism study revealed, using Fisher's exact test, In the control group, all genotype frequencies were non-significantly higher than in the patient group, with probability Fisher (0.547 vs. 0.409), the genotype GG and G allele were shown to have a high ratio in both the patients (53.33 vs. 72.2%) and control group (60 vs. 78.2%, respectively), Consequently, it represents the genotype that is most prevalent in Iraqi population. Furthermore, GG genotype and the G allele were considered the Preventivefraction depending on their RR values (0.76, 0.73). However, patients had significantly higher frequencies of the A allele and the AA genotype (8.89 vs. 27.8%, respectively) compared to the control group (3.64 vs. 21.8%, respectively), according to Probability Fisher (0.404 vs. 0.409).The AA genotype and A allele were regarded as the etiological fraction and related with hypertension basedon the values of RR (2.59, 1.38). While, the GA genotype frequency was significantly higher in patients compared to controls (37.78 vs. 36.36%, respectively), with values of RR (1.06). In addition, the GA genotype has been considered to be a contributing factor in the etiology of hypertension.

The study's findings were in agreement with those reported in the results [14], that that certain single-nucleotide polymorphisms (SNPs) of CRP are related to higher CRP levels and involved in the development of atherosclerosis with consider to be an indicator of ischemic stroke (IS) in older individuals. On the other hand, study [15] indicated that a single nucleotide polymorphism 1444GA SNP (rs1130864) located in the 3'-untranslated (UTR)region of CRP, which the A allele has been related with elevated levels of CRP than the G allele in several inflammation conditions, such as cardiovascular disease and gingivitis. This corresponds to our current study results. Another study suggested that rs-1130864 variant was strongly associated with microangiopathic stroke [16]. In IS patients, the T allele of rs1130864 was a significant associated with a poor functional outcome, and TT genotype variant increases susceptibility to coronary artery disease (CAD) [17]. SNPrs1130864 has been linked to the incidence of IS and CAD in a number of previous studies [14, 18].

The results of our study agreed with another study that revealed genetic variations in the CRP gene were significantly related plasma CRP levels and help predict the onset of hypertension. rs1130864 genotypes have

been linked to adult hypertension and higher serum CRP levels, and patterns AA and GA have been identified as genetic markers for these conditions [3]. Besides, gene-gene and interactions between genes and the environment seem to affect CRP levels. However, our analyses focused on the impact of CRP gene variations, and this was an only limitation to our study. In conclusion, this is a first article to detail the genotypes distribution of the CRP gene for SNP rs1130864 in the adult population of Iraq and to demonstrate a link between the hypertension condition and genotypes for the CRP gene for SNP rs1130864.

Competing Interest

The authors declare that there is no conflict of interest.

Author Contributions

Luay Qasim Abdulhameed: the research article proposal, experiment design, explaining the findings, and article writing.

Mohanad W. Mahdi Alzubaidy: Preparing materials, Funding acquisition, Data curation, Statistical analysis and review & editing.

References

- Popescu S, Scricieiu M, Mercuț V, Țuculina M, Dascălu I. Hypertensive patients and their management in dentistry. *International Scholarly Research Notices*, (2013); 2013: 1-9.
- Abdulhameed L. 25(OH)D vitamin D deficiency relationship with blood pressure (BP), parathroid hormone (PTH) and plasma renin activity (PRA) among Iraqi hypertensive case. *Biochemical and Cellular Archives*, (2018); 18(2): 2061-2065.
- Kong H, Qian Y, Tang X, Zhang J, Gao PJ, Zhang Y, Zhu DL. C-reactive protein (CRP) gene polymorphisms, CRP levels and risk of incident essential hypertension: findings from an observational cohort of Han Chinese. *Hypertension Research*, (2012); 35(10): 1019-1023.
- Smith G, Lawlor D, Harbord R, Timpson N, Rumley A, Lowe G, Day L, Ebrahim S. Association of C-reactive protein with blood pressure and hypertension: life course confounding and mendelian randomization tests of causality. *Arteriosclerosis, thrombosis, and vascular biology*, (2005); 25(5): 1051-1056.
- Lakoski S, Cushman M, Palmas W, Blumenthal R, D'Agostino R, Herrington D. The relationship between blood pressure and C-reactive protein in the Multi-Ethnic Study of Atherosclerosis (MESA). *Journal of the American college of cardiology*, (2005); 46(10): 1869-1874.
- Cortez A, Muxfeldt E, Cardoso C, Salles G. Prognostic value of C-reactive protein in resistant hypertension. *American Journal of Hypertension*, (2016); 29(8): 992-1000.
- Mozos I, Jianu D, Gug C, Stoian D. Links between high-sensitivity C-reactive protein and pulse wave analysis in middle-aged patients with hypertension and high normal blood pressure. *Disease Markers*, (2019); 2019:1-9.
- Hage F and Szalai A. C-reactive protein gene polymorphisms, C-reactive protein blood levels, and cardiovascular disease risk. *Journal of the American college of cardiology*, (2007); 50(12): 1115-1122.
- Martínez-Calleja A, Quiroz-Vargas I, Parra-Rojas I, Muñoz-Valle JF, Leyva-Vázquez MA, Fernández-Tilapa G, Vences-Velázquez A, Cruz M, Salazar-Martínez E, Flores-Alfaro E. Haplotypes in the CRP gene associated with increased BMI and levels of CRP in subjects with type 2 diabetes or obesity from Southwestern Mexico. *Experimental Diabetes Research*, (2012); 2012:1-7.
- Komurcu-Bayrak E, Erginel-Unaltuna N, Onat A, Ozsait B, Eklund C, Hurme M, Mononen N, Laaksonen R, Hergenc G, Lehtimäki T. Association of C-reactive protein (CRP) gene allelic variants with serum CRP levels and hypertension in Turkish adults. *Atherosclerosis*, (2009); 206(2): 474-479.
- Kluft C and de Maat M. Genetics of C-reactive protein: new possibilities and complications. *Arteriosclerosis, thrombosis, and vascular biology*, (2003); 23(11): 1956-1959.
- Reynoso-Villalpando G, Casillas-Munoz F, Padilla-Gutiérrez J, Seviliano-Collantes C, Moreno-Ruiz I, Del Cañizo-Gómez F, Valdez-Haro A, Martínez-Fernández D, Valle Y. The Genetic Variants - 717T > C (rs2794521), 1444G > A (rs1130864), and 1846 C > T (rs1205) of CRP Gene, Their Haplotypes, and Their Association with Serum CRP Levels, Acute Coronary Syndrome, and Diabetes in Patients from Western Mexico. *Metab Syndr Relat Disord*, (2021); 19(3): 127-136.
- Alzubaidiy M, Almohaidi A, Sultan A, Abdulhameed L. Evaluation of E-selectin rs 5367 C/T Polymorphism in Iraqi Diabetic Foot patients. *Journal of Physics: Conference Series*, (2019); 1249(6): 1-7.
- Morita A, Nakayama T, Soma M. Association study between C-reactive protein genes and ischemic stroke in Japanese subjects. *American Journal of Hypertension*, (2006); 19(6): 593-600.
- Delongui F, Lozovoy M, Iriyoda T, Costa N, Stadlober N, Alfieri D, Flauzino T, Dichi I, Simão A, Reiche E. C-reactive protein+1444CT (rs1130864) genetic polymorphism is associated with the susceptibility to systemic lupus erythematosus and C-reactive protein levels. *Clinical Rheumatology*, (2017); 36(8): 1779-1788.
- Kuhlenbaeumer G, Hüge A, Berger K, Kessler C, Voelzke H, Funke H, Stoegbauer F, Stoll M, Ringelstein E. Genetic variants in the C-reactive protein gene are associated with microangiopathic ischemic stroke. *Cerebrovascular Diseases*, (2010); 30(5): 476-482.
- Zhou F, Zhou Y, Zhou L, Guo T, Yu D. Association of CRP gene rs1130864 polymorphism with ischemic stroke and coronary artery disease: A meta-analysis. *International Journal of Clinical and Experimental Medicine*, (2017); 10(11): 15032-15039.
- Guo J, Yu L, Zhang J, Chen N, Zhou M, He L. CRP gene polymorphism predicts post-stroke functional outcome in Han Chinese. *Acta neurologica Scandinavica*, (2014); 129(4): 263-268.



This work is licensed under a Creative Commons Attribution-NonCommercial 4.0 International License. To read the copy of this license please visit: <https://creativecommons.org/licenses/by-nc/4.0/>